

**GOODYEAR**  
ROAD THERAPY



**GOODYEAR**  
*EfficientGrip* PERFORMANCE SUV

**MORE QUIET**  
**MORE COMFORT**  
**MORE** 😎 👍 😊 🎵

Transform your trip into an energizing one that's hard to put into words.

QuietTred TECHNOLOGY



Quiet  
Performance



Comfort  
Performance



Wet  
Performance

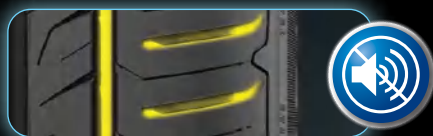


Free\* tire replacement  
in case it gets damaged  
by nasty road hazards.

\*Terms & conditions apply.



# EfficientGrip PERFORMANCE SUV



## QUIET PERFORMANCE

### CLOSED GROOVES & SHOULDER DESIGN

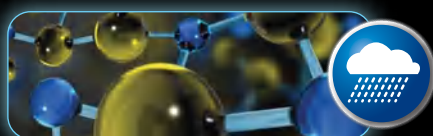
Low radiated noise generation through reduced radial air pumping for a lower exterior and interior noise level providing a quiet ride



## COMFORT PERFORMANCE

### SHOCK ABSORBING CONSTRUCTION

FlexContact technology comprising of specific compound heavy gauge undertread and gum barrier layer provides increased amortization to reduce tire vibration for great comfort



## WET PERFORMANCE

### WET PERFORMANCE HIGH PERFORMANCE CAP COMPOUND

New innovative polymer from Germany with optimized microstructure provides increased surface microstructure for better grip in wet road conditions as well as increased intramolecular bonding for precise steering response



### AVAILABLE SIZES:

Size	SKU Descriptions	Car Fitments
225/65 R17 102H	EFFICIENTGRIP PERFORMANCE SUV FP	Honda CR-V 2.0, Mazda CX-5, 2015 Nissan X-Trail T32, Toyota Harrier 2.0 Elegance, Suzuki Grand Vitara
225/60 R17 99V	EFFICIENTGRIP PERFORMANCE SUV FP	Hyundai Tucson, Kia Sportage, Subaru Forester, Nissan X-trail 2013, Toyota Alphard
265/65 R17 112H	EFFICIENTGRIP PERFORMANCE SUV FP	Toyota Fortuner 2.5, Toyota Hilux 3.0, 2016 Toyota Hilux 2.4G, Ford Ranger 3.2XLT, Mazda BT-50, Mitsubishi Pajero Sport VGT
225/55 R18 98V	EFFICIENTGRIP PERFORMANCE SUV FP	Mitsubishi Outlander 2.4 Mivec, Subaru Forester XT, Nissan Elgrand 3.5, 2017 Peugeot 3008, Maxus G10
225/60 R18 100H	EFFICIENTGRIP PERFORMANCE SUV FP	Honda CR-V 2.4, Lexus NX200t, Lexus NX300h, Subaru Outback 2.5, Renault Koleos 2.5
235/50 R18 97V	EFFICIENTGRIP PERFORMANCE SUV FP	Audi Q3 2.0, BMW X3, Mercedes-Benz GLA200, 2016 Toyota Alphard 3.5, 2016 Toyota Vellfire 2.5
235/55 R18 100H	EFFICIENTGRIP PERFORMANCE SUV FP	Kia Sorento, Kia Sportage, Toyota Harrier, Chevrolet Captiva
235/60 R18 107V	EFFICIENTGRIP PERFORMANCE SUV XL FP	Lexus RX270, Lexus RX350, Audi Q5, Hyundai Santa Fe, Kia Sorento, Volvo XC60, 2017 Honda CR-V 1.5TC
255/55 R18 109V	EFFICIENTGRIP PERFORMANCE SUV XL FP	Porsche Cayenne, Porsche Macan, Volkswagen Touareg, BMW X5, Mercedes ML 350
255/60 R18 112V	EFFICIENTGRIP PERFORMANCE SUV XL FP	Ford Everest XLT 3.0, 2016 Isuzu D-Max, Isuzu MU-X, Nissan Navara NP300 2.5VL
265/60 R18 110V	EFFICIENTGRIP PERFORMANCE SUV FP	2016 Toyota Hilux 2.8, 2016 Toyota Fortuner 2.7SRZ, Ford Ranger 3.2, Ford Ranger 2.2 FX4, Ford Everest 2.2, Chevrolet Colorado LTZ
235/50 R19 99V	EFFICIENTGRIP PERFORMANCE SUV FP	Toyota Harrier 19" option, Chevrolet Captiva LTZ 2.0
235/55 R19 105V	EFFICIENTGRIP PERFORMANCE SUV XL FP	Audi Q5 2.0, Hyundai Santa Fe, Kia Sorento UM, Lexus RX 350, Land Rover Freelander, 2017 Mercedes GLC200
245/55 R19 103V	EFFICIENTGRIP PERFORMANCE SUV FP	Toyota Kluger
275/40 R20 102V	EFFICIENTGRIP PERFORMANCE SUV FP	Range Rover, Range Rover Sport, Volkswagen Touareg, Audi Q7

